



Apartment





3 NEW MOON APTS, 37A SHIRE OAK ROAD, LEEDS, LS6 2DB

Per Month

£850 Per

FEATURES

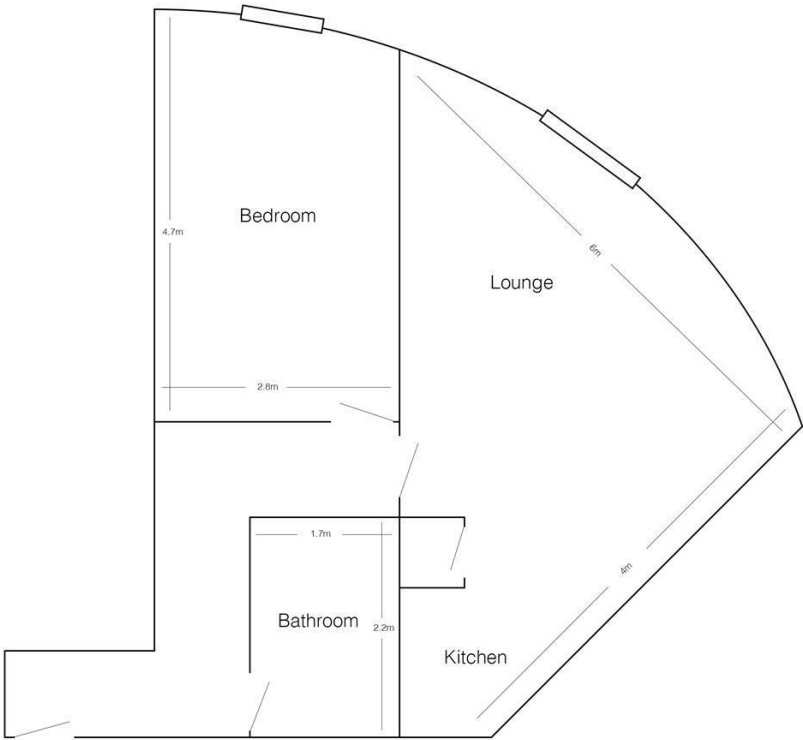


 1  1  1  c

SJM [©]
PROPERTIES

1 Bedroom Apartment located in Leeds

Luxury modern apartments in Headingley, where there are fabulous bars, restaurants, coffee bars and other amenities. This apartment has a spacious lounge with wooden flooring, sofa and chair. A fully fitted modern open plan kitchen with a free standing fridge freezer and washing machine, it also has an integrated fan oven and hob. The carpeted bedroom has a double bed, fitted wardrobe and desk with chair. The fully tiled bathroom features a shower-bath. The property also benefits from double glazing throughout and has off street parked accessed through electrically operated gates.



3 New Moon
(drawing not to scale)

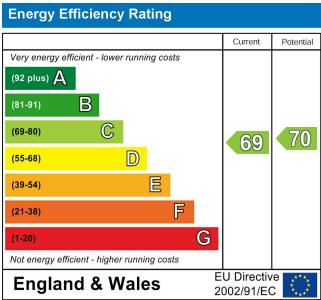
Call us on

01132782201

phil@sjm-properties.com
sjm-properties.com

Council Tax Band

B



Agents Note: Whilst every care has been taken to prepare these particulars, they are for guidance purposes only. All measurements are approximate and are for general guidance purposes only and whilst every care has been taken to ensure their accuracy, they should not be relied upon and potential buyers are advised to recheck the measurements.

SJM ©
PROPERTIES